

CONTACT

The principal contacts are:

- » Kue Young, Dalla Lana School of Public Health, University of Toronto; International Network for Circumpolar Health Research, kue.young@utoronto.ca
- » Susan Chatwood, Institute for Circumpolar Health Research, Yellowknife, NT, susan.chatwood@ichr.ca

Institute of Circumpolar Health Research

3502 Raccine Road
Yellowknife, NT X1A 3J2
Tel: +1.867.873.9337
Fax: +1.867.873.9338

Email: info@ichr.ca

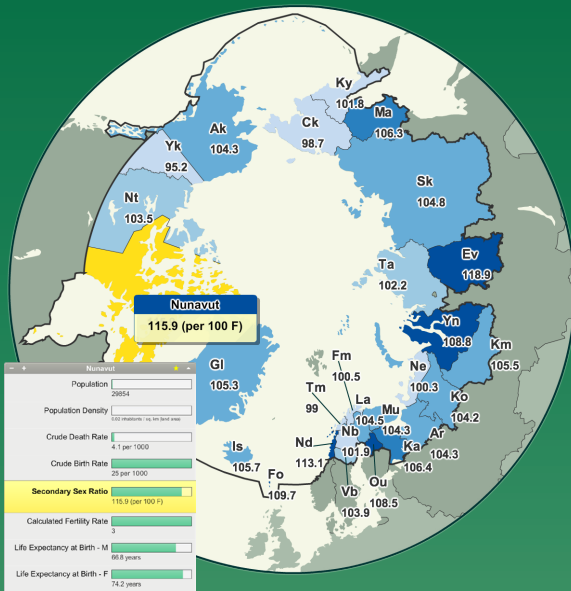
— www.ichr.ca —

CIRCUMPOLAR HEALTH



OBSERVATORY

— circhob.circumpolarhealth.org —



DATA VISUALIZATION

Selected portions of the datasets have been visualized through the interactive thematic mapping and graphing functionality offered by *StatPlanet*, a free FLASH-based web application created by UNESCO and affiliated organizations. The aim of StatPlanet is to promote evidence-based decision making by improving and facilitating the communication and interpretation of information. It enables users to explore demographic, education, environment, health and socio-economic indicators from various sources including the datasets compiled by the Circumpolar Health Observatory.

StatPlanet was conceptualized and is being developed by Frank van Cappelle since 2005. Since 2008, the development of a tailored version of StatPlanet is being undertaken as part of the SACMEQ research programme at the UNESCO International Institute for Educational Planning (IIEP).

— www.sacmeq.org/statplanet/ —



Institute for
Circumpolar
Health Research



UNIVERSITY OF
TORONTO

